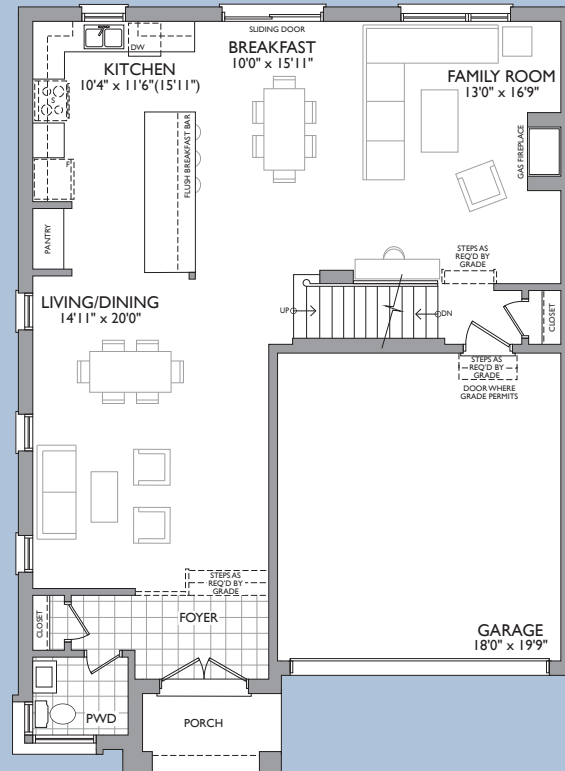
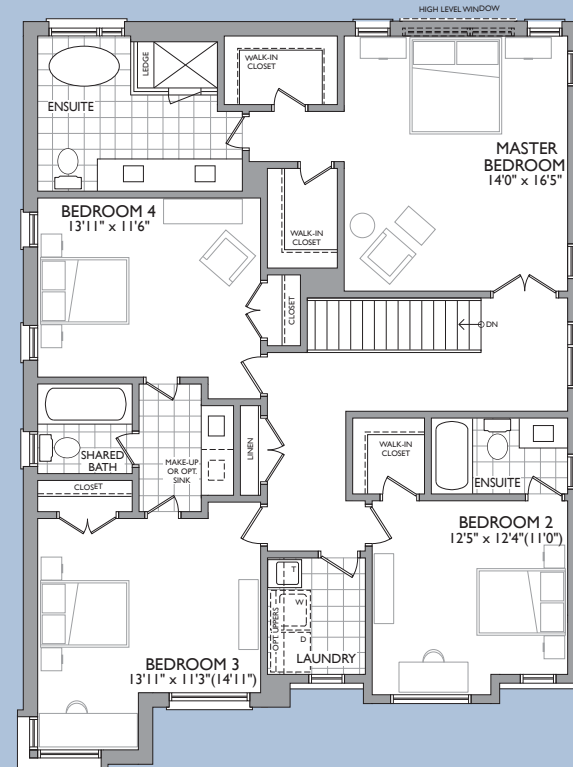


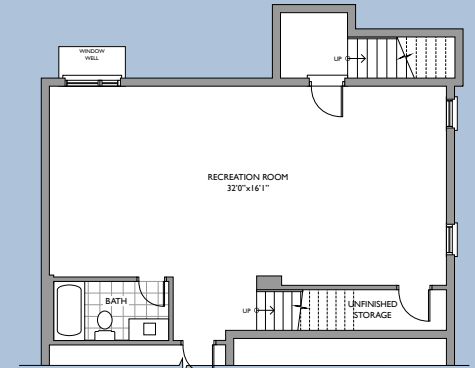
FIRST FLOOR
LOTS: 3, 5, 7



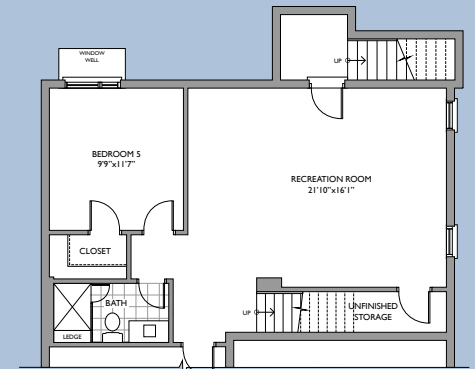
FIRST FLOOR ALTERNATE
LOTS: 1, 4, 6, 8



SECOND FLOOR
LOTS: 1, 3, 4, 5, 6, 7, 8



STANDARD WALK-UP BASEMENT



OPTION 1:
WALK-UP BASEMENT WITH BEDROOM

ELEVATION A



ELEVATION B



ELEVATION C



Frenchman's Bay

PICKERING

MADISON GROUP

Dimensions, materials, specifications, structural elements and floorplans are subject to change without notice. Actual usable floor space may vary from the stated floor area. Layout shown may be the reverse of the unit purchased. Exterior elevation and site plan are subject to approval by applicable authorities and the purchaser agrees to accept any change. The size and location of windows, mullions, exterior doors, patios and/or balconies are subject to change and may vary depending on unit location within the project. Furniture is displayed for illustration purposes only and does not necessarily reflect the electrical plan of the unit. All illustrations are artist's concept only. E. & O. E., February 2020.

WHARF

2,692 sq.ft.
+ 659 sq.ft. Finished Basement